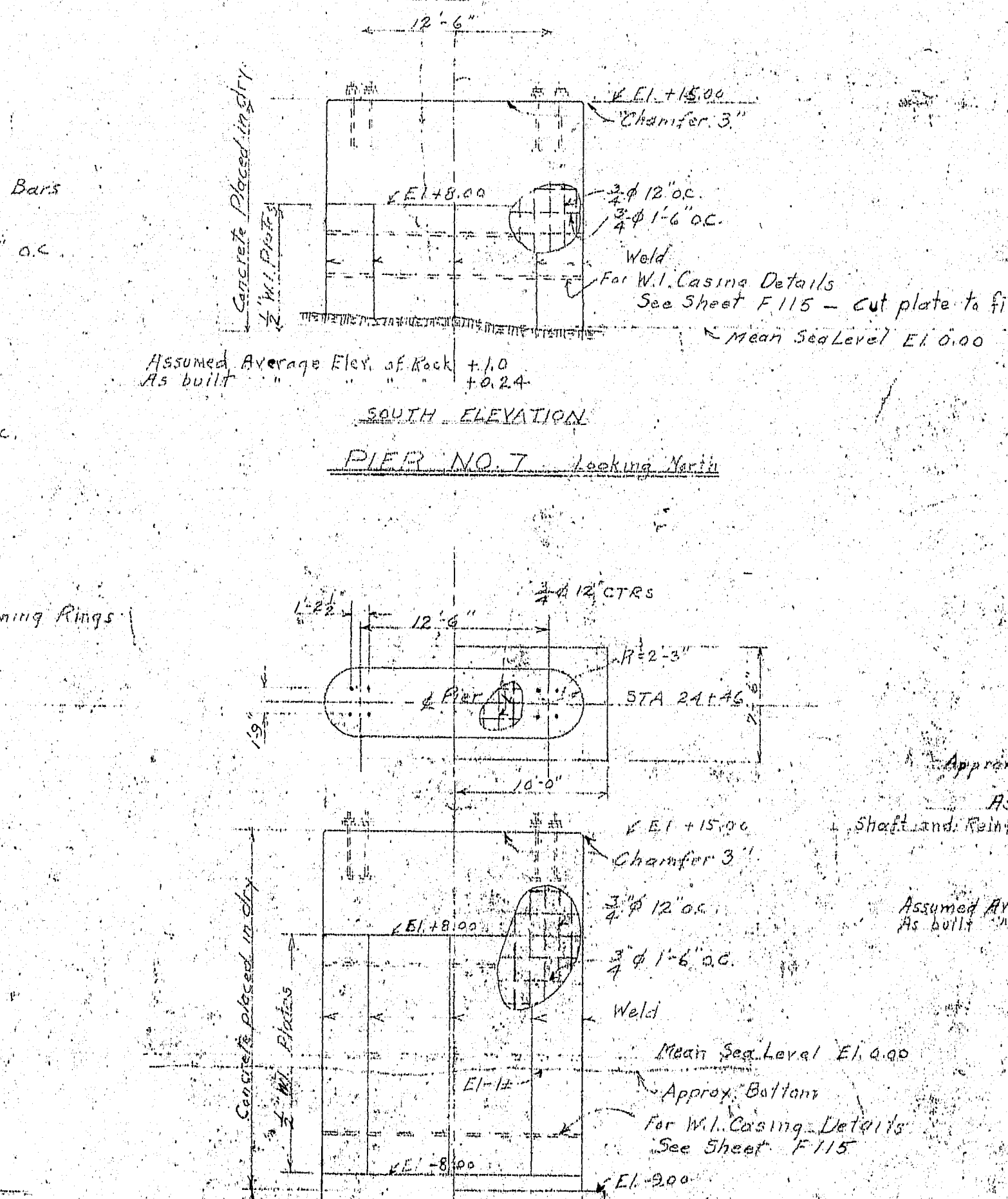
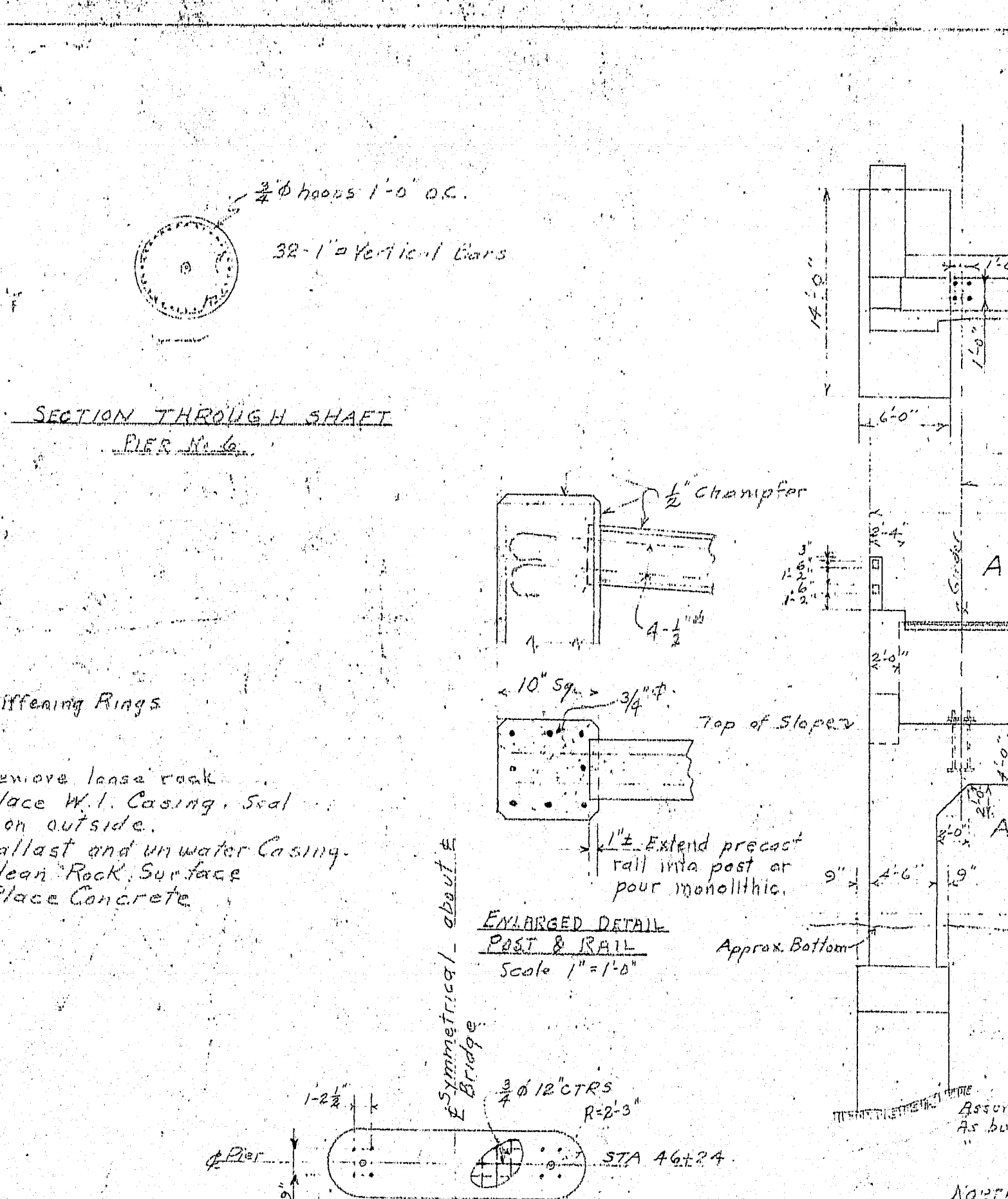
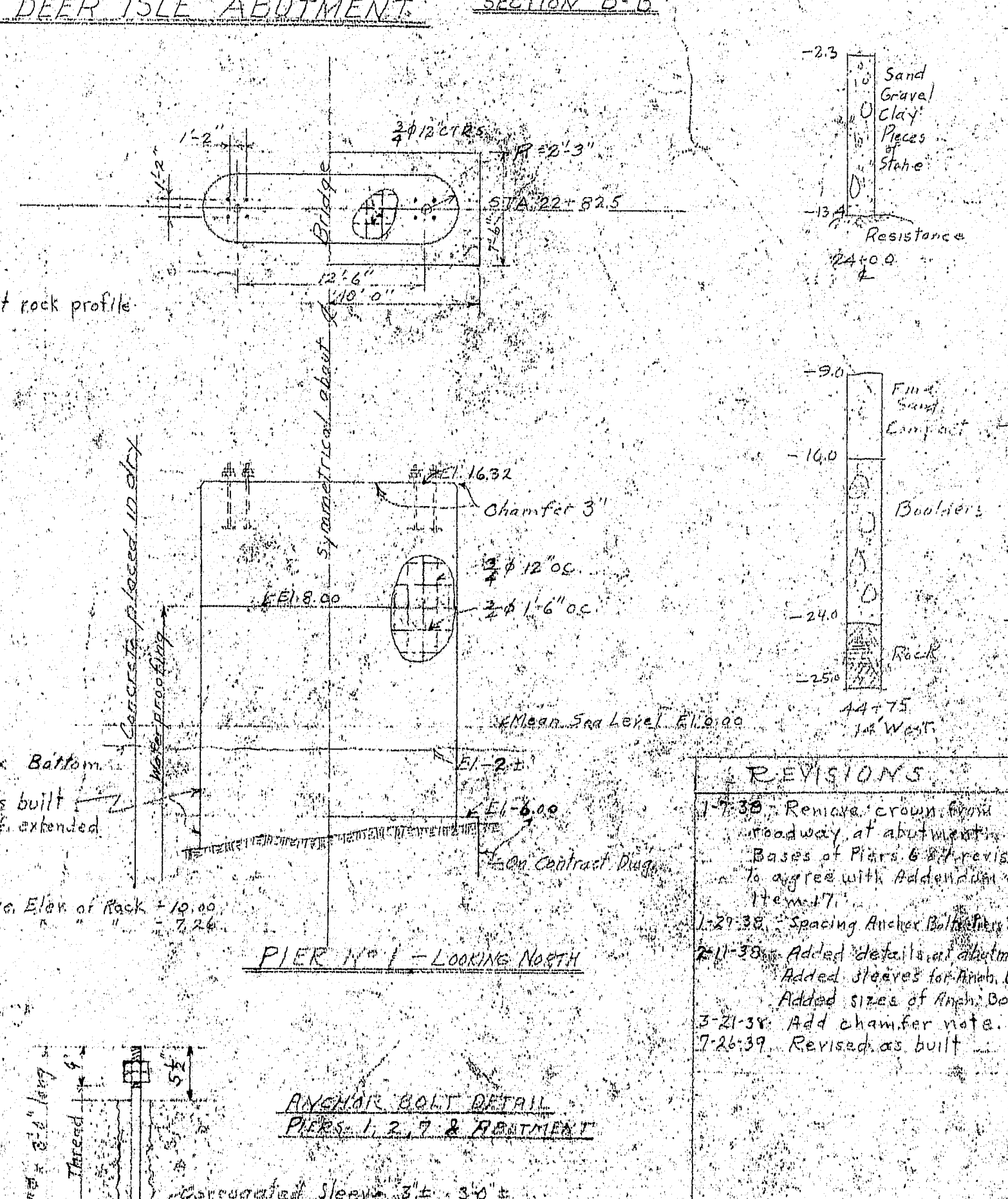
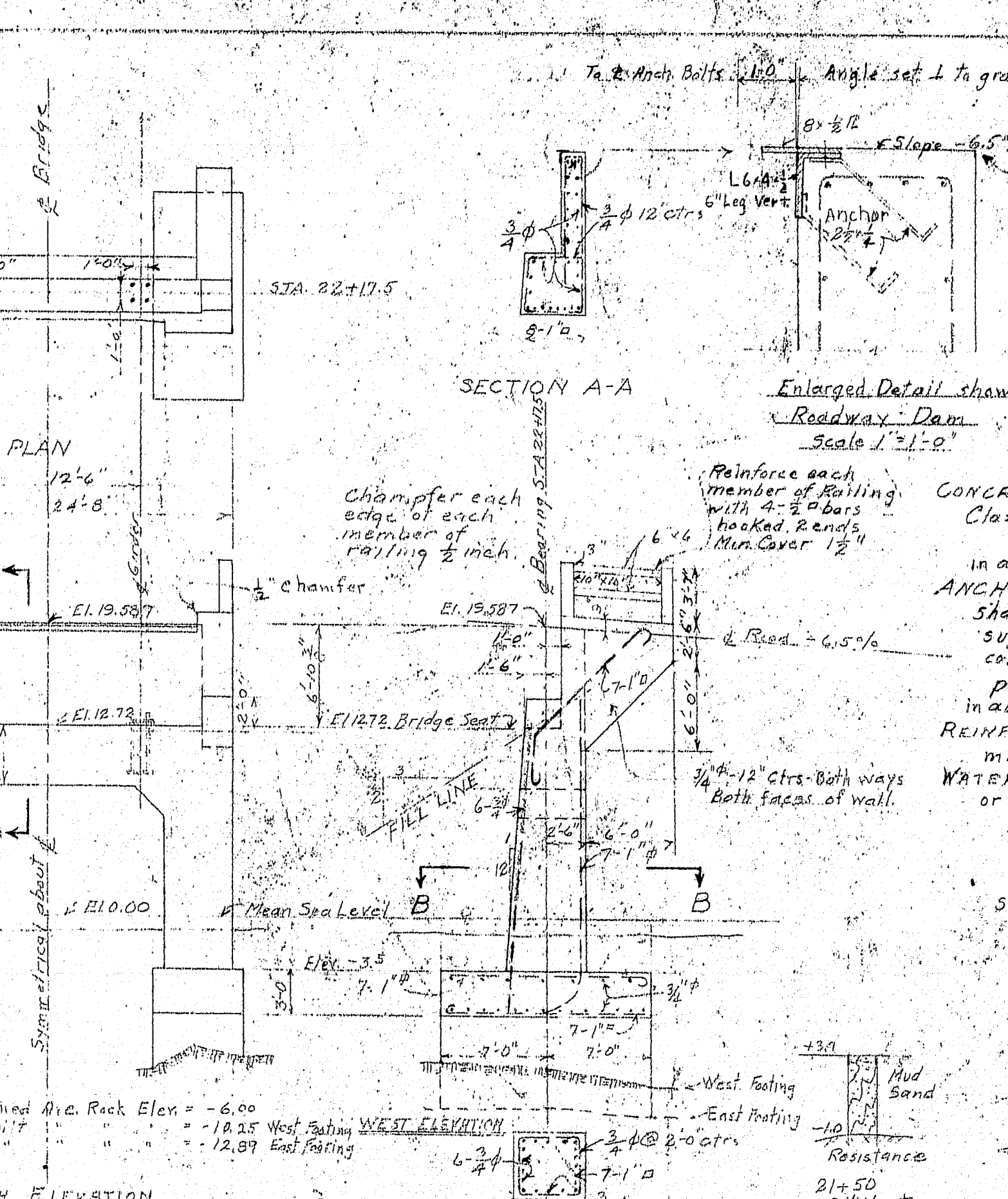


SPECIAL NOTE:
Should contractor choose to unwater site of Pier 3 by use of dam, well points, or other means, the West pillars may be founded directly on rock as in Pier No. 6, the concrete base being omitted. W.I. Casing must be carried down to El. -8.00.



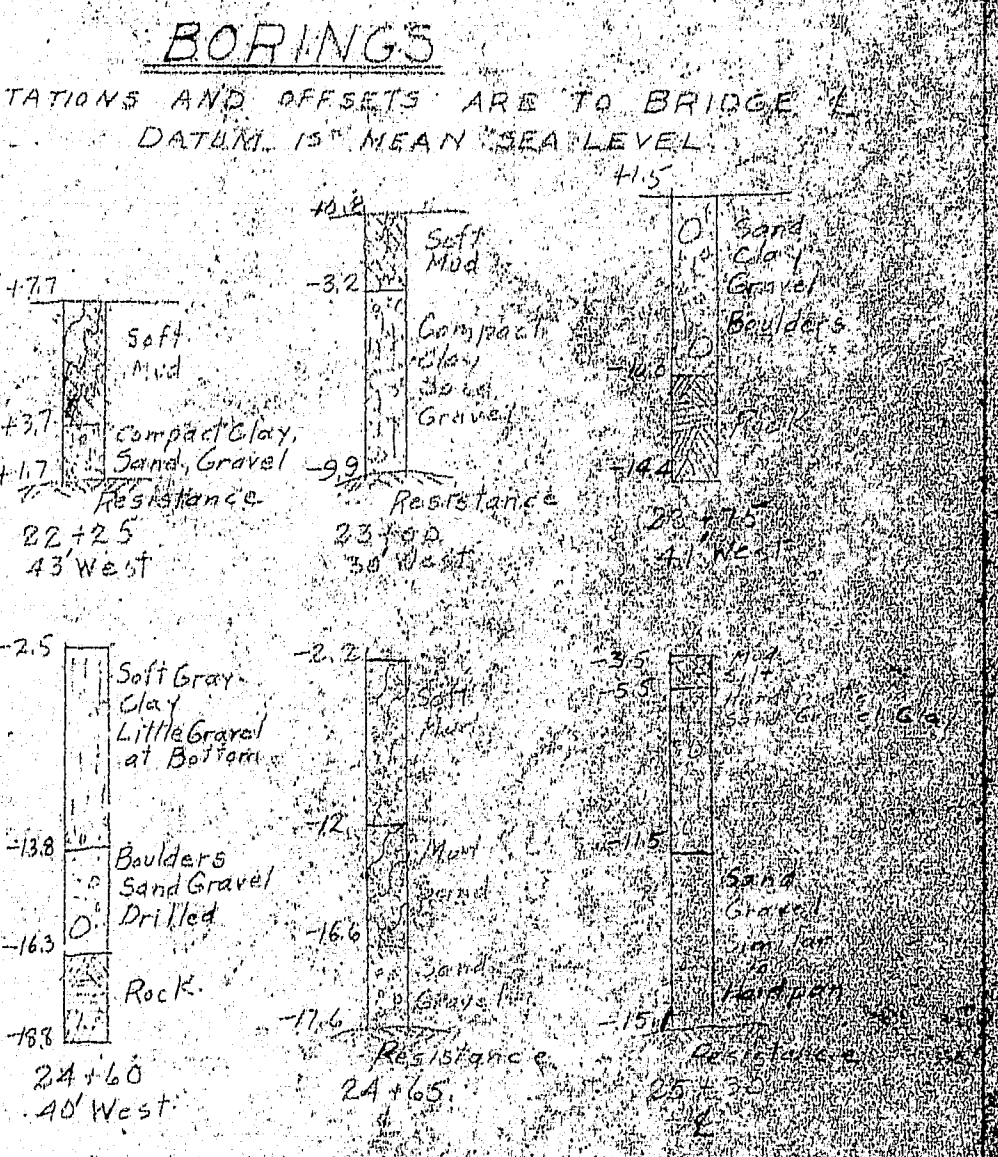
SPECIAL NOTE:
Should contractor choose to unwater site of Pier 2 or Pier 1, to rock by use of dam, well points, or other means, the pier may be founded directly on rock as shown for Pier No. 7, the base being omitted.



SPECIAL NOTE:
Should contractor choose to unwater site of Pier 1, to rock by use of dam, well points, or other means, the pier may be founded directly on rock as shown for Pier No. 7, the base being omitted.

ANCHOR BOLTS
To Anchor Bolts 1/2" Angle set 1 to grade.
REQUIRED
L 6x4
Pl. 8x4
Anchor 2 1/2" 12 o.c.
This material to be furnished by Superstructure Contractor.

GENERAL NOTES
CONCRETE: Concrete placed under water shall be Class A in accordance with AASHTO specifications. Concrete placed in dry shall be Class B in accordance with AASHTO specifications. ANCHOR BOLTS, ETC.: Anchor bolts and tie rods shall be furnished by the contractor for the superstructure and shall be placed by the contractor for the substructure. The latter shall provide a steel frame to hold the bolts in accurate position while concrete is being placed. REINFORCEMENTS: All reinforcement shall have a minimum cover of 4 inches of concrete. WATERPROOFING: Waterproofing shall be of material or of approved equal. See specifications.



REVISIONS

- 1-28-39. Remove crown from roadway of abutment.
- 2-1-39. Bases of Piers 6 & 7 revised to agree with Addendum No. 11-2-39.
- 2-1-39. Spacing Anchor Bolts at 36".
- 2-1-39. Added detail of abutment added sleeves for anchor bolts. Added sizes of anchor bolts.
- 3-21-39. Add chamfer note.
- 7-26-39. Revised as built.

SUBSTRUCTURE
PWA PROJECT NO. ME 1010
DEER ISLE SEDGWICK BRIDGE DISTRICT
BRIDGE OVER EGGMOGGIN REACH
FROM LITTLE DEER ISLE TO SEDGWICK
HANCOCK COUNTY MAINE
CABLE BENT PIERS
VIADUCT PIERS AND ABUTMENT
ROBINSON AND STEINMAN
ENGINEERS
NEW YORK CITY
SCALE: 1" = 10'
DRAWING NUMBER
RS 3310 T 114
DATE: 12-1-38

ESTIMATED QUANTITIES

ITEM	UNIT	PIER 1	PIER 2	PIER 3	PIER 6	PIER 7	DEER ISLE ABUTMENT
CONCRETE PLACED UNDER WATER	Cu Yd	22.0 (0)	48.1 (0)	87.0 (0)	197.48	100.43	16.0 (0)
CONCRETE PLACED IN DRY	Cu Yd	1.60 (0.3)	6.4 (0.6)	11.1 (0.8)	1.72 (0.3)	2.72 (0.3)	0.3 (0.1)
Reinforcement	Lb	2,312 (84)	2,577 (88)	1,710 (62)	14,800 (530)	6,780 (245)	2,700 (97)
Wrought Iron	Lb	13,600	13,200	13,200	14,800 (530)	6,780 (245)	2,700 (97)
Waterproofing	Sq Ft	2,400 (97)	2,400 (97)	2,400 (97)	2,400 (97)	2,400 (97)	2,400 (97)

